

 **GERARD**<sup>®</sup>  
ROOFING SYSTEMS



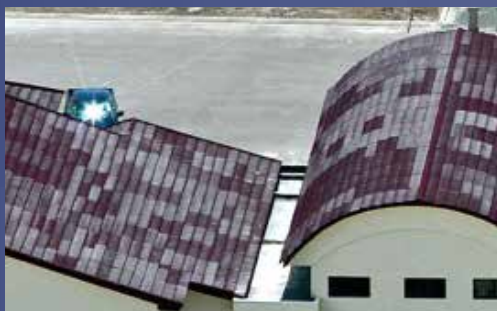
*Helping **You** Decide*

# Considering These?



## Clay / Concrete Tiles

Clay tiles are often chosen for their natural looks and aesthetic value. Unfortunately, the brittle nature of clay makes them expensive and results in a huge amount of wastage. Clay tiles are often broken during transit, installation and even once installed by falling tree branches, fruit, and hail. High winds can also dislodge them causing water damage to the house. Clay tiles are also susceptible to algae growth.



## Fake and Copy Stone Coated Metal Roof Tiles

Since inventing the steel roofing tile in 1957, many companies have tried to copy our products. However, without our experience and expertise, they have found it impossible to match our high standards of durability and quality. Cheap copies and Gerard® fakes can corrode quickly and will suffer from colour change in the harsh African sun.



## Thatch / Majani

The traditional look of a thatch roof is its enduring quality. Though today, with many more electrical products in the home, smoking and cooking, the risk of fire and its consequences are too great for many to even consider it. The very nature of the material also means you're going to be sharing your home with many of nature's creatures - and not all of them are friendly! A wet thatch roof after rainfall is the ideal breeding ground for mosquitoes. Thatch also needs replacing periodically.



## Bitumen Shingles

Bitumen, or asphalt, shingles are generally made from waste paper, coated with bitumen and asphalt, and ceramic granules. Being made of paper makes them susceptible to fire and heavy rainfall causes permanent damage. Each tile needs to be fixed individually, so bitumen shingles tend to be expensive to install and takes a long time to get right.

MAKE SURE IT'S  
**#Genuine**

## We Recommend These



### Gerard® Milano Tile

The Gerard® Milano tile replicates beautifully the style of Roman villa tiles, with none of the disadvantages of fragile and brittle clay tiles. With little to no wastage, Milano offers a cost effective and longer lasting alternative to clay. Finished with natural stone chip with a biocide coating, the Gerard® Milano tile offers vibrant colours that last without the risk of damage from vegetative growth. Plus, our unique fixing method ensures that Gerard® tiles cannot be uprooted, even by hurricane strength winds.



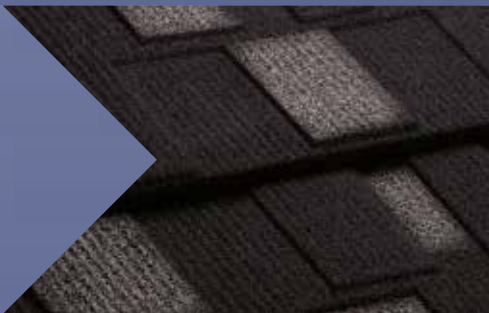
### Gerard® Classic Tile

The worlds best selling stone coated steel roof tile will provide you with a hassle-free roof. For durability, we haven't seen a tile that comes close, even by the coast. We provide a written 50 year warranty thanks to the core of alu-zinc steel and our unique manufacturing processes. The natural stone coating ensures that the colour will not fade and will remain vibrant, long after other roofs have faded and look ugly.



### Gerard® Shake Tile

The Gerard® Shake tile is often used to replace thatch roofs, giving a thatch appearance but combined with modern lightweight technology and durability that far outstrips traditional thatch methods. The main advantage of using Gerard® Shake instead of thatch is the outstanding fire resistant performance, protecting both property and occupants. Many of Africa's best hotels have chosen Gerard® Shake for these reasons.



### Gerard® Shingle Tile

Fast to install, durable and good looking, Gerard® takes the style of Bitumen Shingles to the next level. A three dimensional tile, stone coated and ribbed to aid rainwater removal, a Gerard® Shingle roof can give a unique and evolving appearance as the sun's reflection changes throughout the day, depending on its position. A favourite with architects, Gerard® Shingle creates a strong appearance with long durability to please any home owner.

# A Buyer's Guide to Roofing

		Others (Coated Metal Tiles)	Long Run	Clay / Concrete	Thatch	Bitumen Shingles
Lightweight	✓	✓	✓	✗	✓	✓
Fast Installation	✓	✓	✓	✗	✗	✗
Strong	✓	✓	✗	✗	✗	✗
Natural Stone Finish	✓	?	✗	✗	✗	✗
Fire Resistance	✓	?	?	✗	✗	✗
Secure	✓	✓	✗	✗	✗	✗
International Certification	✓	?	?	?	?	?
Trusted Supplier	✓	?	?	?	?	?
Warranty	50 Years	?	?	?	?	?

## Performance



### Fire

- Class A and B under UL 790 (ASTM E-108) when applied in accordance with instructions.



### Lightweight

- 7.0kg/m<sup>2</sup>.



### Hurricane

- Hurricane Test by Construction Research Laboratory Inc., Miami, Florida, USA.



### Strong

- Concentrated Force on Roofing Tiles to Australian Standard 1582, Rule 5.2 by Cyclone Testing Station, Australia.



### Corrosion

- Salt/fog Test to ASTM B117.
- 100% Relative Humidity Test to ASTM D2247.



### Security

- High speed dynamic Rain Penetration and High Wind Loading Tests by Construction Research Laboratory Inc., Miami, Florida, USA.



### Hail

- Hailstone Test by Commonwealth Scientific and Industrial Research Organisation, Division of Building, Construction and Engineering, Australia.



### Rain (Monsoon)

- Cyclone Loading Test to wind loading code, Australian Standard 1170, Part 2 1975 by Cyclone Loading Station, Australia.

 **GERARD**<sup>®</sup>  
ROOFING SYSTEMS

[www.gerardafrica.com](http://www.gerardafrica.com)

